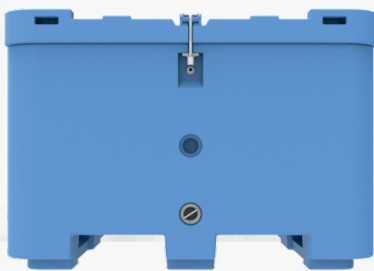
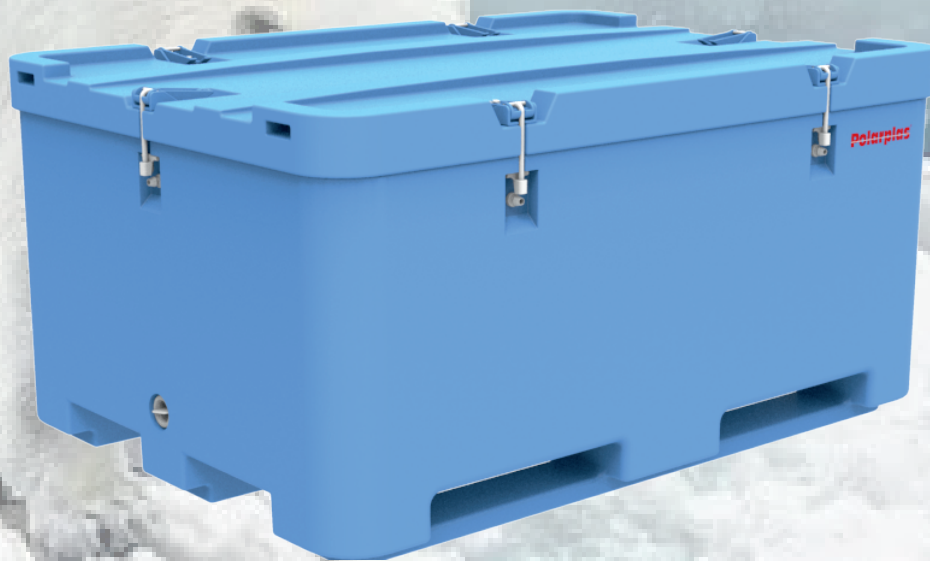
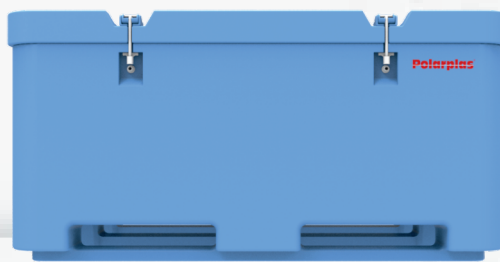


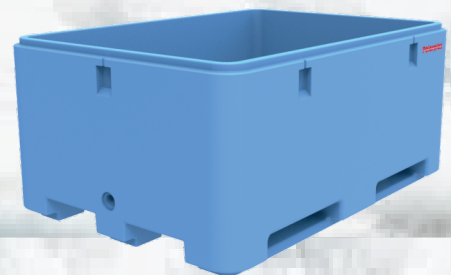
### PP-D1000P2PU



Side View



Front View



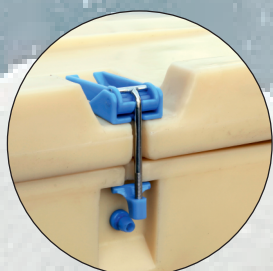
Isometric View

## We keep it COOL....

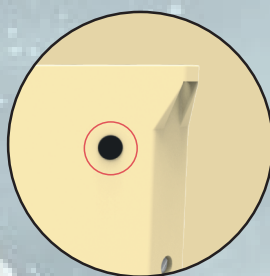
**POLARPLAS®** a leading global plastic converting and moulding company, with a state-of-the-art manufacturing facility in rotational and injection moulding based out of Gujarat, India. The parent company established in 1996 as a green field project from Iceland went through different transformation and structural changes in its 25 years of existing, and now reincarnated to **POLARPLAS®**

**POLARPLAS®** manufacture wide range of rotational moulded proprietary products in double and single wall, used for in-house processing, preserving, storage, transportation, and cold chain application. The double wall products are insulated with PUR or PE foaming to maintain the best isothermal properties. **POLARPLAS®** are also into rotational moulded pallets, active and passive plastic body refrigeration freezers and chillers, custom moulded products and injection moulded industrial crates.

**POLARPLAS®** has the best in the knowledge for the product design, innovation, productivity, and quality performances at the customer place and beyond. More details on the product, service, and offerings, please visit [www.polarplas.com](http://www.polarplas.com)



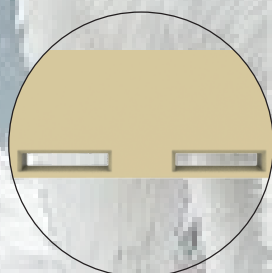
**Tight Plastic SS Clamp Option**



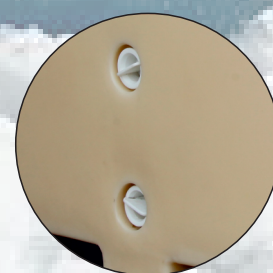
**Option for RFID Tag**



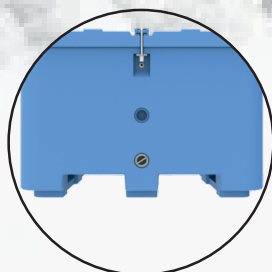
**Thick Insulated Wall**



**Convenient Forklift**



**Convenient Drainage with Parking**



**3 Legs give Extra strength to Bottom**



**Application**

## Salient Features

- Certified Food Grade Raw Material
- Durable, Longer Life, High Impact Resistance
- Safe For Direct Food Contact
- Heavy Duty Extremely steady container
- Injected Polyurethane that's result high insulation
- Also available with PEInsulation for strong insulation

- Easy Cleaning And Non-Porous Structure
- Product Marking And Colour Coding Possibility
- Easy Stack able with or without Lid
- Supply With & Without Lid
- Outer Skin Availability With LLDPE Or HDPE

## Dimension Details

Model	External Dimensions (mm)			Internal Dimensions (mm)			Capacity
	Length	Width	Height	Length	Width	Height	
<b>PP-D1000P2U</b>	1700	1220	850	1580	1100	580	1000 Liter

**Manufactured By: Seaplast (India) Private Limited**

**MARKETED BY:  
POLARPLAS (INDIA) PRIVATE LIMITED**

B-212, Ratnaakar Nine Square, Opp. Keshavbaug Party Plot, Mansi Road, Vastrapur, Ahmedabad - 380 015, Gujarat, India. Tel: +91 79 4007 3880, Email: sales@polarplas.com



**Toll Free: 1800 123 55 8585 -For More Details Visit Us at [www.polarplas.com](http://www.polarplas.com)**